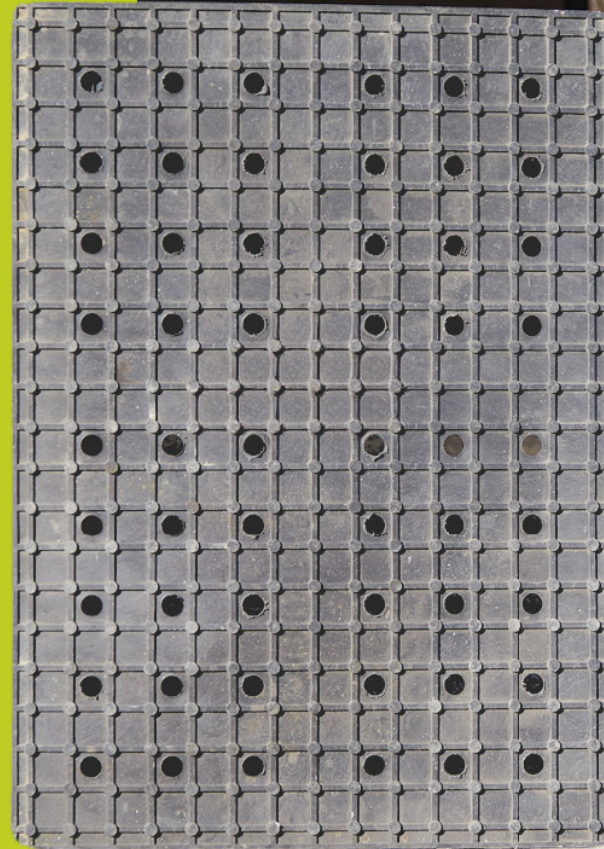


MUDGUARD STABILISING MATS

Performance begins
with the ground
beneath you!

SAFEFLOOR



Revolutionize your riding arena with the perforated light mats for superior footing.

Whether you're building a new equestrian arena or looking to upgrade an existing one, proper footing is critical for the safety, performance, and comfort of your horses. Introducing perforated light mats, designed specifically to create an optimal riding surface for all equestrian disciplines.



SAFEFLOOR

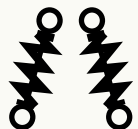
Key benefits



Surface stabilisation. Light mats separate the substructure from the sand layer and ensure that the ground will be stable and level even after many years of use.



Better water utilisation. All substrates built on quartz sand require water. By using light mats, a thinner layer of sand can be used. The matting also prevents water loss by soaking into the ground, while not interfering with drainage. As a result, 50% less water is used for irrigation of the riding arena compared to traditional sand bases.



Superior shock absorption. Protect your horse's joints and tendons with our perforated light mats. The unique design helps cushion the impact during riding, reducing strain on the horse's legs, preventing injuries, and enhancing overall comfort.



Perfect drainage system. The perforations allow for superior drainage, preventing water from pooling on the surface. This ensures that the arena stays functional, even after heavy rainfall, promoting consistent footing all year round.



Enhanced traction. Light mats provide excellent grip and stability, allowing horses to perform at their best without the risk of slipping or losing balance.



Durability and longevity. Built to withstand heavy usage, light mats are made from high-quality, eco-friendly materials. They are resistant to wear and tear, ensuring long-term performance, even in the busiest arenas. The mats come with a 20-year guarantee on the functional features.



Easy installation & maintenance. Our mats are lighter than competing mats, modular and easy to install. They can be quickly laid over different surfaces, from sand to dirt, and require minimal maintenance.

Why choose perforated light mats for equestrian footing?



Consistency. Whether it's for training, recreation, jumping, or dressage, these mats provide a uniform surface, reducing the risk of inconsistent footing that can lead to injuries.



Environmentally friendly. Made from 100% recyclable materials, our perforated light mats are an eco-conscious choice for equestrian sports facilities.

SAFEFLOOR

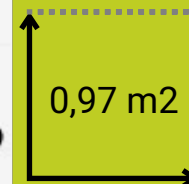
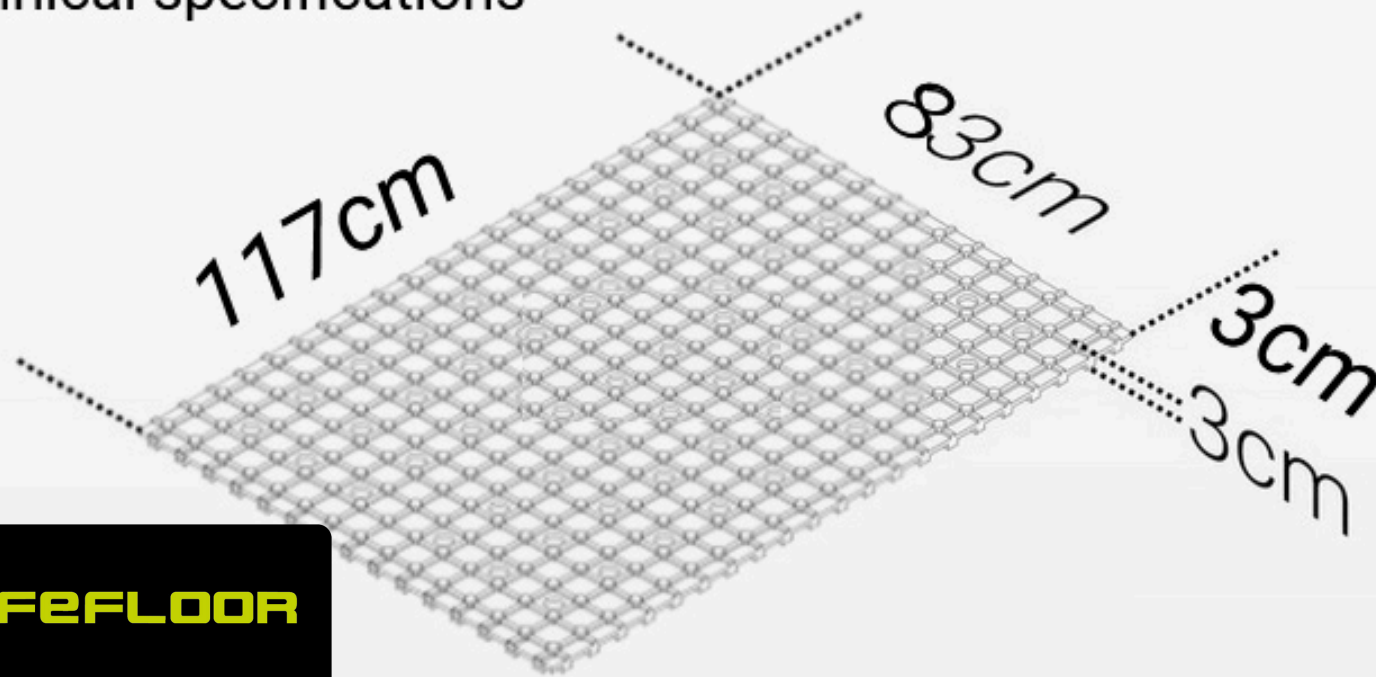


Application

- 1 Indoor & outdoor arenas
- 2 Riding schools
- 3 Competition arenas
- 4 Horse walkways
- 5 Stable flooring



Technical specifications



SAFEOFLOOR

Mudguard mats are lighter than competing solutions. The reduced weight means lower transport costs and a more favourable price, while maintaining the full properties of the stabilising mats.



How to Get Started?

Ready to upgrade your equestrian surface?

Contact us today for a free consultation or a custom quote.

Final effect

SAFEFLOOR ApS
Astrupvej 4A, Mesballe
DK-8550 Ryomgaard

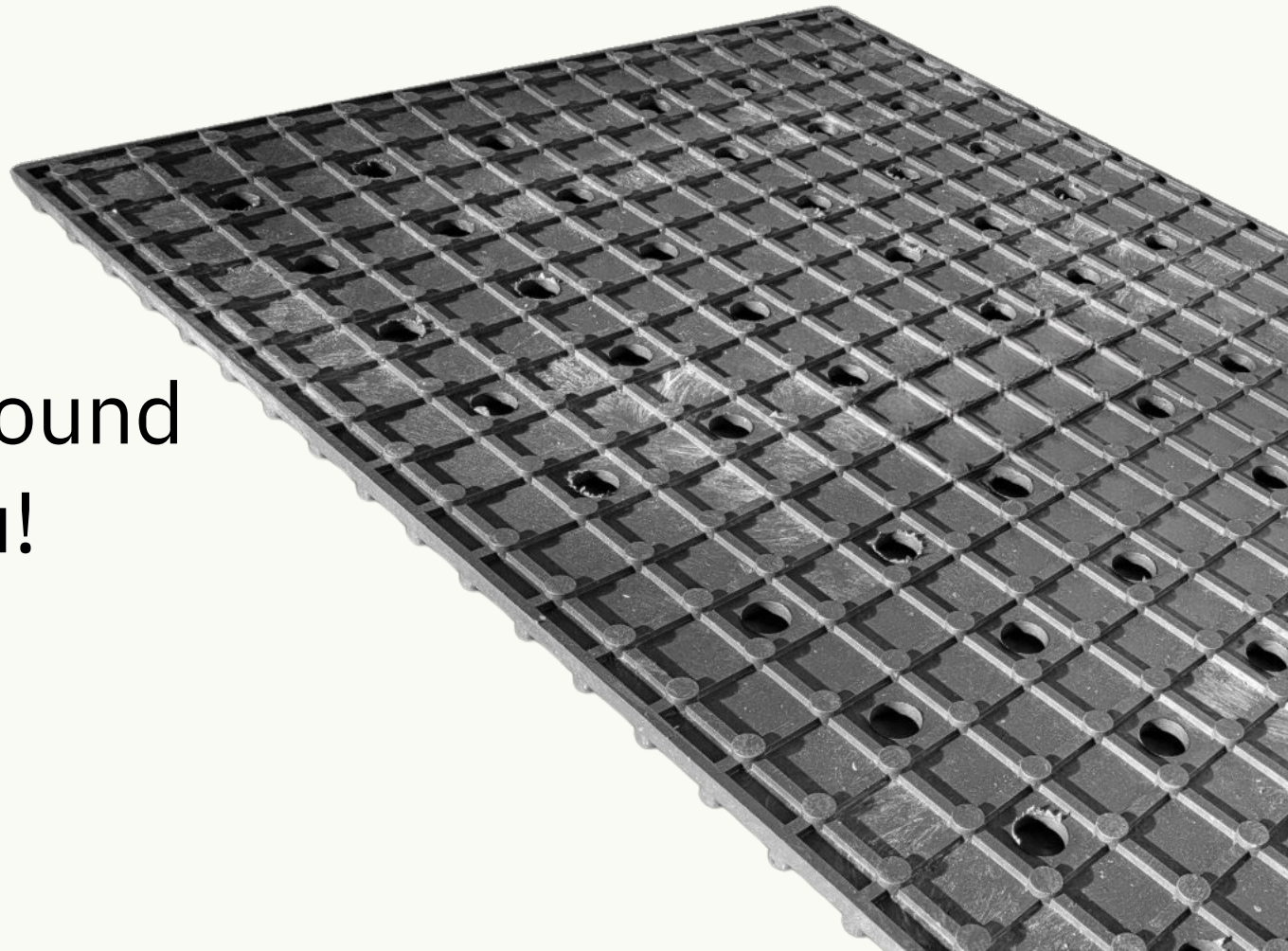
Tlf.: +45 8615 1925

www.safefloor.dk

SAFEFLOOR

Ensure the best for your horses with our perforated mats,
designed for performance, safety, and comfort.
Experience a new level of equestrian excellence
with improved footing that both you
and your horses will appreciate.

Performance
begins with the ground
beneath you!



SAFEFLOOR